

# ALUK BSC94 Sliding Door System

Introducing the BSC94

# High performance and **contemporary design**

Modern, versatile and customisable, the BSC94 In-line Sliding Door combines high performance with contemporary design to provide a reliable aluminium door system for almost any architectural project. Manufactured to the highest UK standards, this multi-configuration system can achieve thermal U-Values of  $1.5\text{W/m}^2\text{K}$  (triple glazed mono rail) and sightlines of as little as 45mm.

In addition to mono, dual and tri rail options, a comprehensive range of colours and anodised finishes is available for the system. The BSC94 also features an anti bimetal polyamide strip to allow for varying expansion rates, ensuring the continued performance of the door in all conditions



# Let life **simply slide**

Enjoy large expanses of light with our smooth operation, all aluminium OPTIO BSC94 Sliding door range. It makes the perfect addition for homes of any size, from modern city centre balconies to opening out onto countryside vistas. Available in both an inline sliding or lift and slide option the OPTIO sliding door is the perfect addition to any home looking to let natural light flood in.

## Stay on track

Create your slider your way with our wide range of frame and sliding styles, including track, panel and glazing options. And make a real statement with our AluK Collection, specifically designed to bring you the latest in colour and textured finishes that give your home that extra level of personalisation.

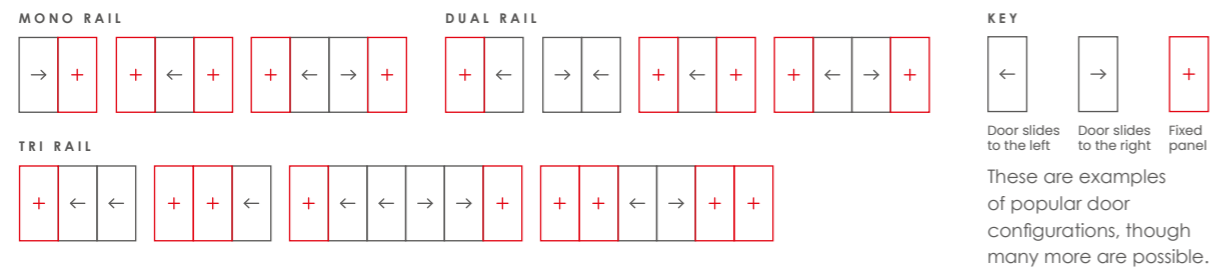
## Safe and sound

With excellent air, water and wind resistance test results, this sliding door range has been designed to withstand the worst of the British weather. Our In-line door offers full PAS24 and Secured By Design accreditation so you can feel completely safe as well as stylish

## The finer details

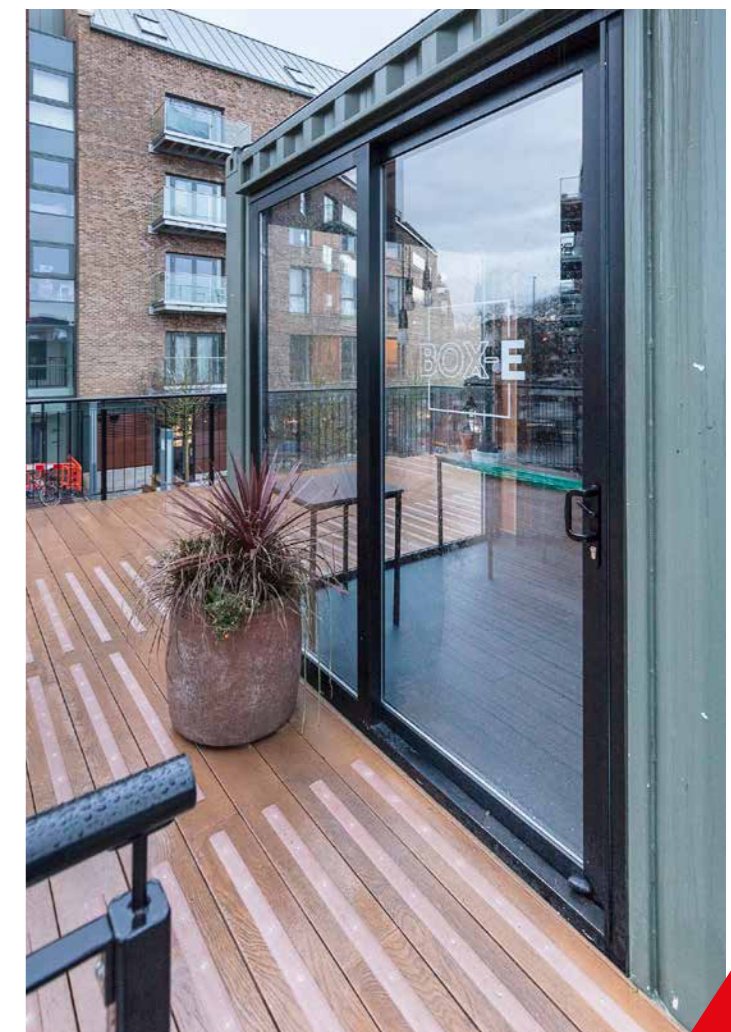
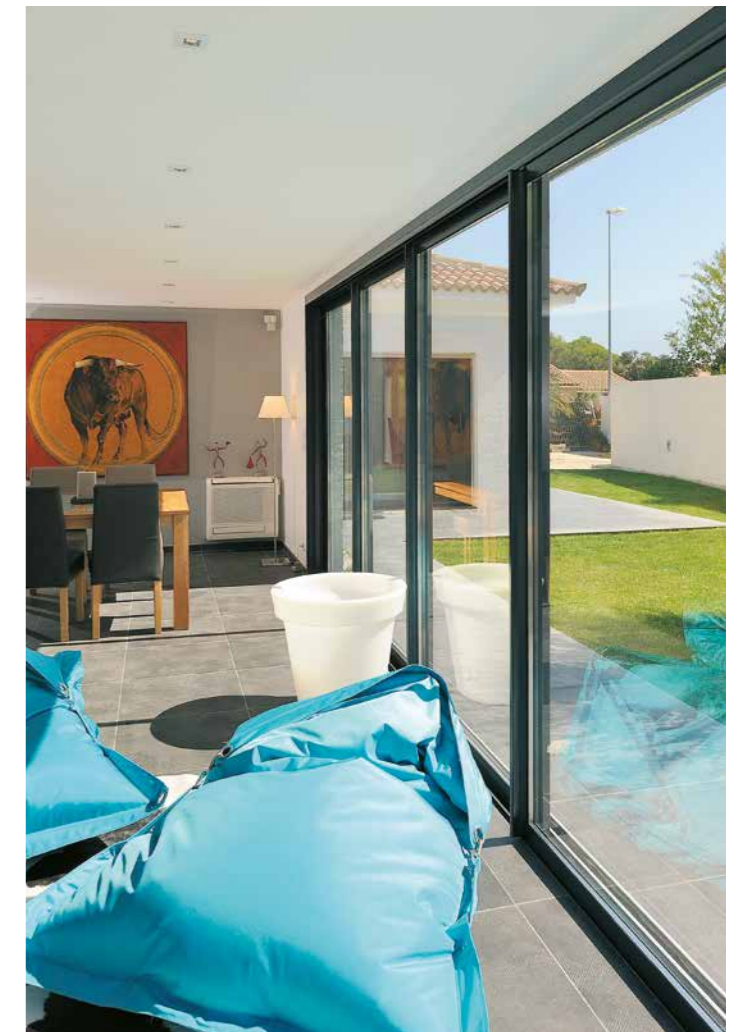
### Configurations

\*Opposite handling available on all configurations. For more options, refer to the Technical Manual.



### Technical data

	BSC94 (Mono Rail)	BSC94 (Dual Rail)	BSC94 Slim (Mono Rail)	BSC94 Slim (Dual Rail)
U-value (double glazing)	1.6 W/m <sup>2</sup> K	1.7 W/m <sup>2</sup> K	-	1.7 W/m <sup>2</sup> K
U-value (triple glazing)	1.5 W/m <sup>2</sup> K	-	-	-
Air Permeability	Class 3 (600 Pa)	Class 3 (600 Pa)	Class 3 (600 Pa)	Class 3 (600 Pa)
Water Tightness	Class 6a (250 Pa)	Class 6a (250 Pa)	Class 6a (250 Pa)	Class 6a (250 Pa)
Wind Resistance	Class B3 (1200 Pa)	Class B3 (1200 Pa)	Class B3 (1200 Pa)	Class B3 (1200 Pa)
Max size (mm)	2000w x 3000h	2000w x 3000h	2000w x 3000h	2000w x 3000h
PAS 24 & SBD	✓	✓	-	-



# Tried, tested and trusted

From trusted favourites to the latest innovations, our comprehensive range of aluminium door systems has been designed and developed with fabricators, installers and homeowners in mind at every stage.

Furthermore, every system delivers the aesthetic appeal and exceptional build quality demanded by the industry. It also goes without saying they've all been tested and certified to the latest standards and accreditations.

These include PAS 24, BS4873, Secured By Design and Qualicoat for starters. Not to mention ISO 9001. They also hold Q-Mark Certifications for enhanced security sliding doors. Should we go on?

Whichever system you choose, we'll work closely with you to ensure you have all the information you require for successful fabrication and installation.

All the latest structural, thermal and wind calculations are available, as is a comprehensive suite of CAD, NBS Specifications, performance and environmental data.

We're always up to the test:



# Finish in style

When it comes to designing aluminium sliding door systems, we go to great lengths to ensure every part plays its part to perfection. No shortcuts are taken, no corners cut.

We take the exact same approach when it comes to developing hardware. Every product is designed to not only complement our systems, but strikingly enhance them too.

Our tested, tried and trusted hardware range includes suited handles, locks, hinges, rollers, bogeys, seals and brushes. Each and every product has to pass our famously stringent tests, with most subjected to 50,000 operational cycles to emulate a lifetime of trouble-free operation. Then the real testing begins.

Our quality assurance team surveys every nut, every screw, every surface to ensure it's both scratch-free and up to scratch.

We also believe security should be a standard, not an aspiration. It's why almost every aluminium door system featuring our hardware is certified by the Secured by Design scheme.

Of course, added strength and security should never compromise style. And certainly never function. It's why our hardware products not only improve ease of operation for years to come, but deliver a timeless look and finish.



BSC94 – Lift & Slide Door Handle



BSC94 – Inline Sliding Door Handle



BSC94 – Inline Sliding Door D Handle

# Colour full

The AluK Colour Collection combines high-quality colour ranges reflecting both the latest colour trends and the enduring classics within the market.

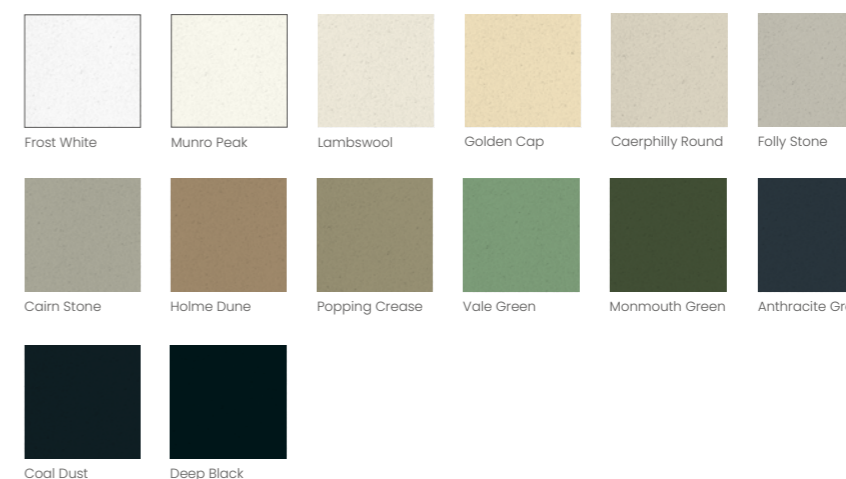
## Elements

Our stylish matt colour range features 18 vibrant colour options in a smooth finish. Inspired by the diversity of nature, Elements offers the perfect combination of rich colours and versatile shades that will compliment any style of property.



## Homestead

Inspired by traditional and period design, our timeless Homestead range offers a classic palette of tranquil neutrals and deep, cool hues. Homestead has 14 tasteful colour options to discover, all in a long-wearing textured finish for our doors.



01291 639 739  
info.uk@aluk.com

**Registered Office**

AluK (GB) Ltd  
Newhouse Farm Ind Est  
Chepstow  
NP16 6UD

**London Office**

AluK Design Studio  
5-11 Worship Street  
London  
EC2A 2BH

**Registered Number**

02881320